



LITHIUM BATTERY ENERGY STORAGE

OCE-2560-2.56KWH-51.2V/50AH

CLASS A

Featuring LiFePO4 A-series cells, our battery pack supports stacking up to 3 units and offers IP65 protection for reliable indoor and outdoor use. Equipped with a BMS for optimal safety and performance, it ensures efficient and secure operation.

CLASS A CELL & 6000 CELLS CYCLE TIMES

- Strong and reliable quality
- 5 years warranty, 10+ years life design

SUITABLE FOR SOLAR STORAGE SYSTEM

- Charge/discharge current up to 25A/50A

INDUSTRY-LEADING BMS TECHNOLOGY

- Compatible with mainstream inverters

STACKABLE DESIGN

- Support stacking up to 3 units, max power 7.68kwh

IP65 PROTECTION RATING

- Excellent dust and water resistance for enhanced device reliability

ALL AROUND PROTECTION

- Stable power supply, precise management, high utilization, long Life cycle

Optimal, Clean, Efficient Energy For Home

MODEL	OCE-2560
BatteryType	LiFePO4
Installation	Stackable
Normal BatteryModel	51.2V50AH
Normal capacity (25°C 0.2C) (Ah)/Max.capacity	2.56 KWh/7.68KWh
voltagewindow (vdc)	44.8~ 58.4V
Float chargevoltage(vdc)	55.2V
Max.continuedischargecurrent(A)	25A
Max. pulsedischargecurrent(A)	50A1Sec
Max.continuechargecurrent(A)	25A
Cycle Life	6000 cycles (@80% DoD/25°C/0.5C,60%EOL)
Storage temperature	0°C~ 30°C
Storageduration	6 months at 25°C
IP Rating	IP65
Communication functionCAN/RS485	Intelligent BMS can communicate with multiple solar inverters

PROTECTION

Protection	Overcharge protection,over-discharge protection,over-current protection, short-circuit protection, over-temperature protection
------------	--

AMBIENT

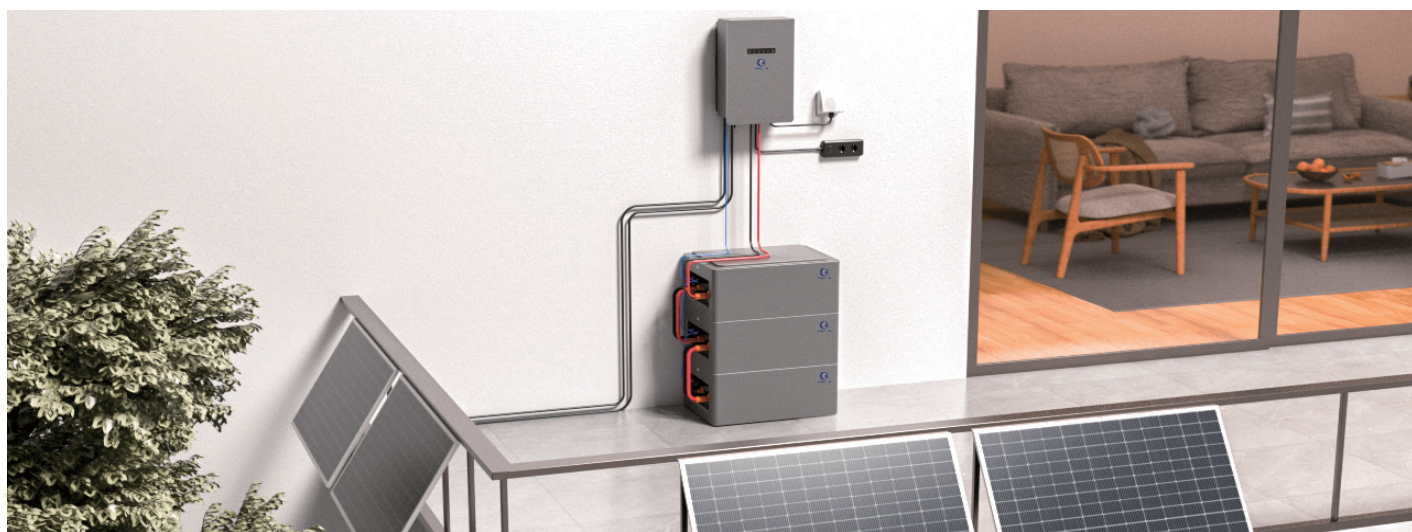
Noise(dB)	< 40dB (1meter)
Working Temperature	- 20°C ~ 60°C
Humidity	0 - 95%
Max Operating Altitude	≤ 1500

DIMENSION

LxWxH (products size) mm	520*360*220mm
LxWxH (package size) mm	610*450*300mm
Weight(NWKg)	32.6 kg
Weight(GWKg)	35.5 kg

CERTIFICATION & SAFETY STANDARD

Certification	CE
Safety standard	UN38.3 MSDS



Ocean Solar

E-mail: info@oceansolar.cn
Web: www.oceansolar.cn

©2025 Ocean Solar All rights reserved.
Specifications included in this datasheet are subject to change without notice.

